



## Building bridges and partnerships with practitioners and researchers in Canadian Biosphere Reserves

Maureen G. Reed, Professor & Assistant Director

School of Environment & Sustainability, University of Saskatchewan (Canada)

**EuroMAB – Sarlat, France – April 6, 2017**

Networking is a physical and cultural challenge



BR-  
Government  
connections  
are weak





## BR- researcher connections vary



Vancouver Island University has become a governing partner at Mount Arrowsmith BR (BC)

University of Saskatchewan students take a required course in the Redberry Lake BR (SK)





# Networking among researchers has been uneven

## Canadian Biosphere Research Network

Welcome to the web site of the Canadian Biosphere Research Network (CBRN)!

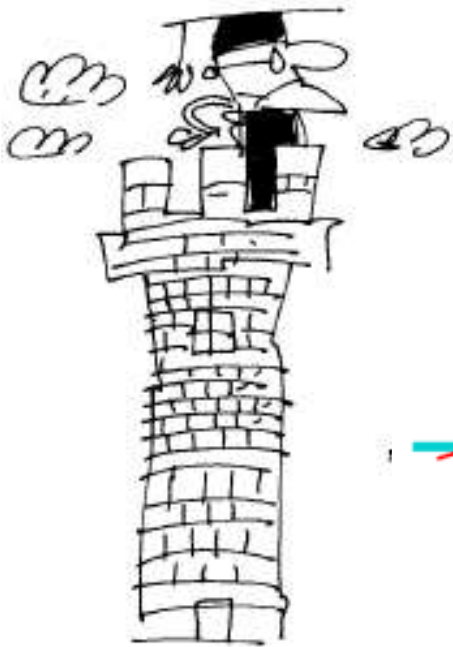


- Home
- About CBRN
- News and events
- BR research
- BR links
- BR initiatives
- BR pictures
- UNESCO documents
- Become a member
- Contact us

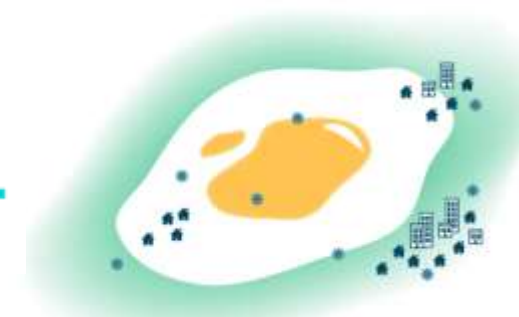
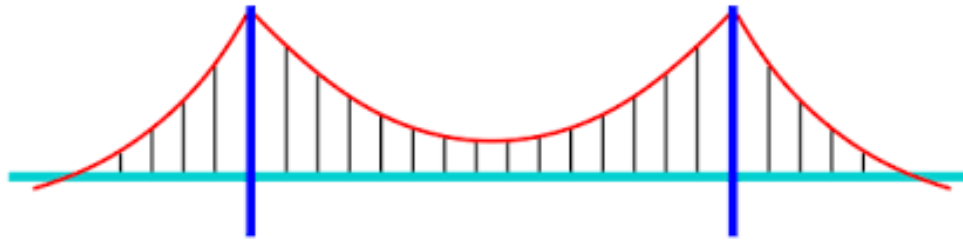


## How, then, to build bridges?

“Scientists”



Biosphere  
Reserve  
Practitioners





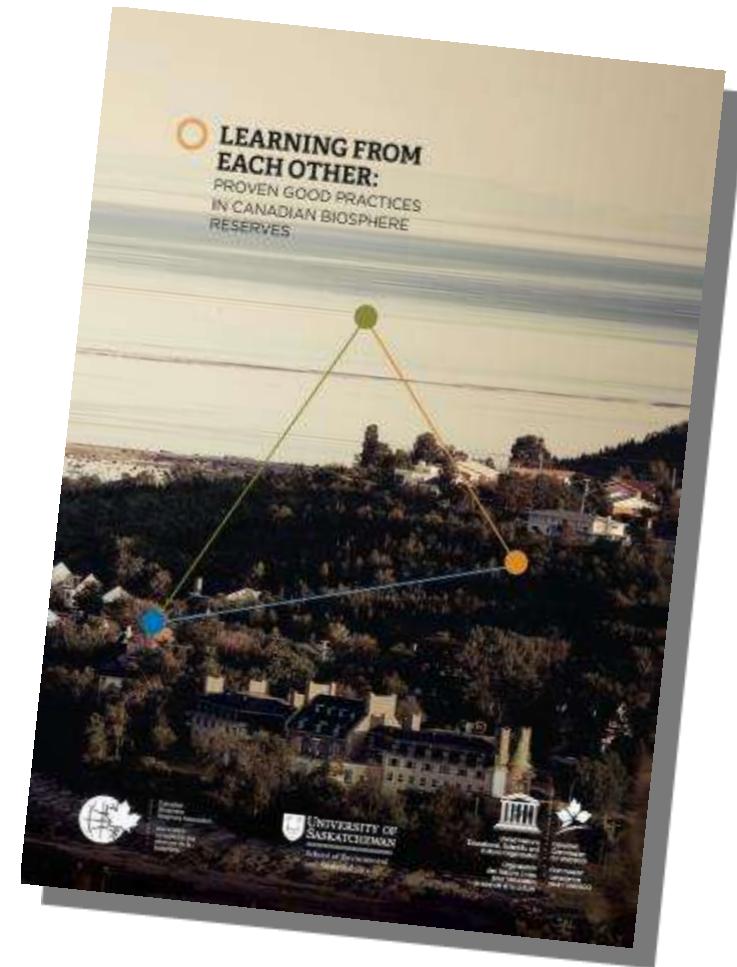
UNIVERSITY OF SASKATCHEWAN

School of Environment  
and Sustainability

USASK.CA/SENS

# 1. Begin by building capacity...

Partnership formed in 2011 to enhance the capacity of Canadian BRs to work together at the *national* level through social learning and networking strategies...





## 2. Co-determine a strategic priority



- For Canada, “reconciliation” and “renewal” between Indigenous and settler Canadians have become priorities for all sectors.
- BRs can be models of reconciliation AND sustainability, thereby addressing UNDRIP, SDGs, and CBD.





UNIVERSITY OF SASKATCHEWAN

School of Environment  
and Sustainability

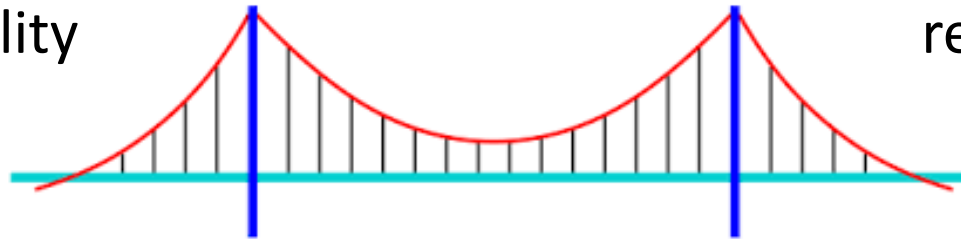
USASK.CA/SENS

### 3. “Sweat”/ work together

## Co-building sustainability & reconciliation



sustainability



reconciliation